

# SCHWARZBECK MESS - ELEKTRONIK

An der Klinge 29 D-69250 Schönau Tel.: 06228/1001 Fax.: (49)6228/1003

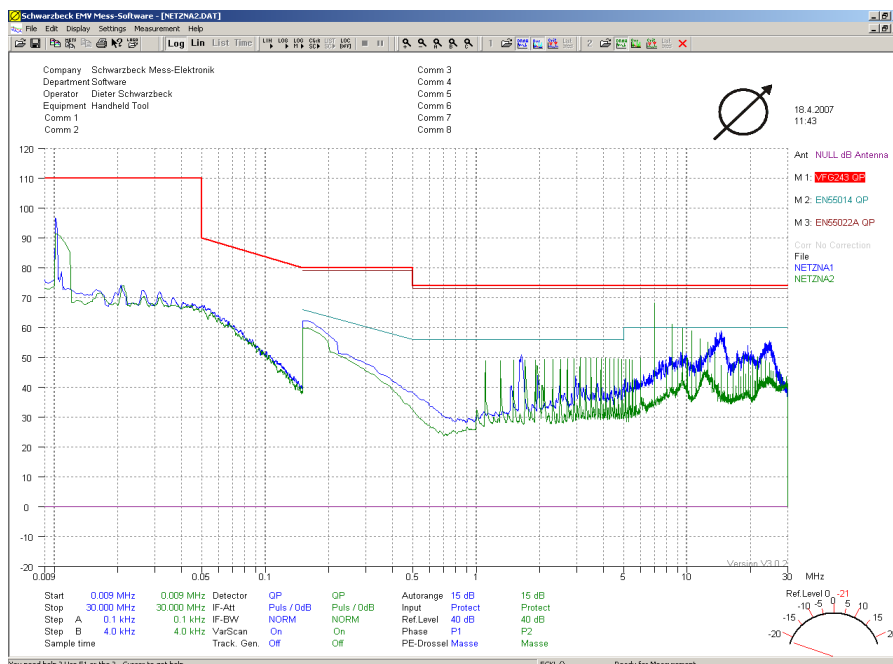
## Messbase-Software for Emission-tests under MS-WINDOWS NT/2000/XP

- Easy to learn and to use
- Fast & Reliable with Variscan and Autorange
- High security against overload using mask-guidance
- User editable limits and antenna factors guarantee high flexibility
- Interactive final measurements with automatic test report generation
- Automatic creation and scan of frequency lists
- Free scalable prints
- User definable creation of test reports
- Convenient graphic features and data transfer to other Windows applications
- Marker with integrated final measurement capability
- Subranges reduce measuring time and provide data reduction
- Remote control for LISN or coaxial switching unit included
- Additional IEEE 488-devices can be integrated on request
- Attenuation measurements > 100 dB for site performance checks or insertion loss of filters
- Comparison of two measured diagrams and up to 3 masks simultaneously
- Accelerator keys for frequently used functions speed up operation
- Click measurement with 10 samples per second
- Context sensitive Online Help
- Macros performing measurements
- Find the Maximum Envelope out of a set of measurements

### Hardware – Requirements:

IBM-compatible PC with Pentium processor, VGA-Graphics,  
min. 10 MByte free space on hard disk, CD-ROM, INES IEEE 488 32-bit interface card.  
PCMCIA-card (INES or National Instruments) also available for portable Computers.

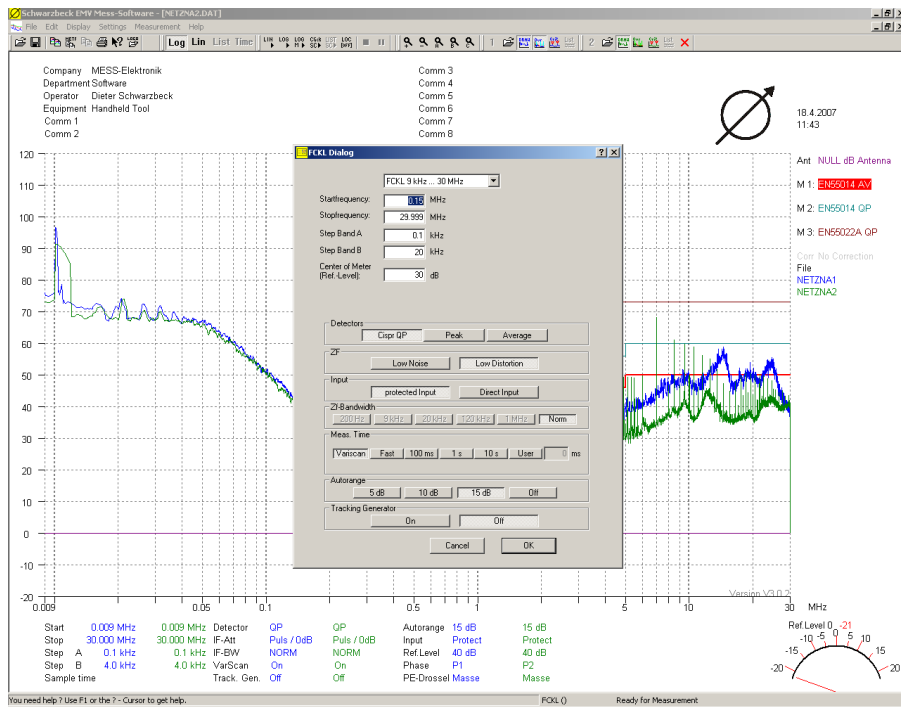
### Work Area



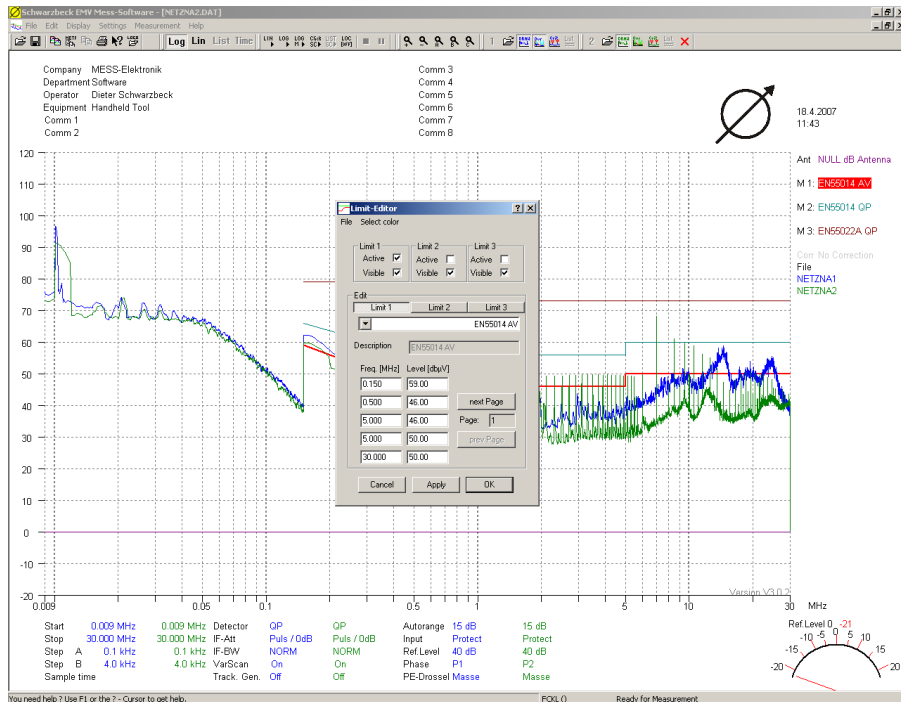
# SCHWARZBECK MESS - ELEKTRONIK

An der Klinge 29 D-69250 Schönau Tel.: 06228/1001 Fax.: (49)6228/1003

## Receiver Parameter



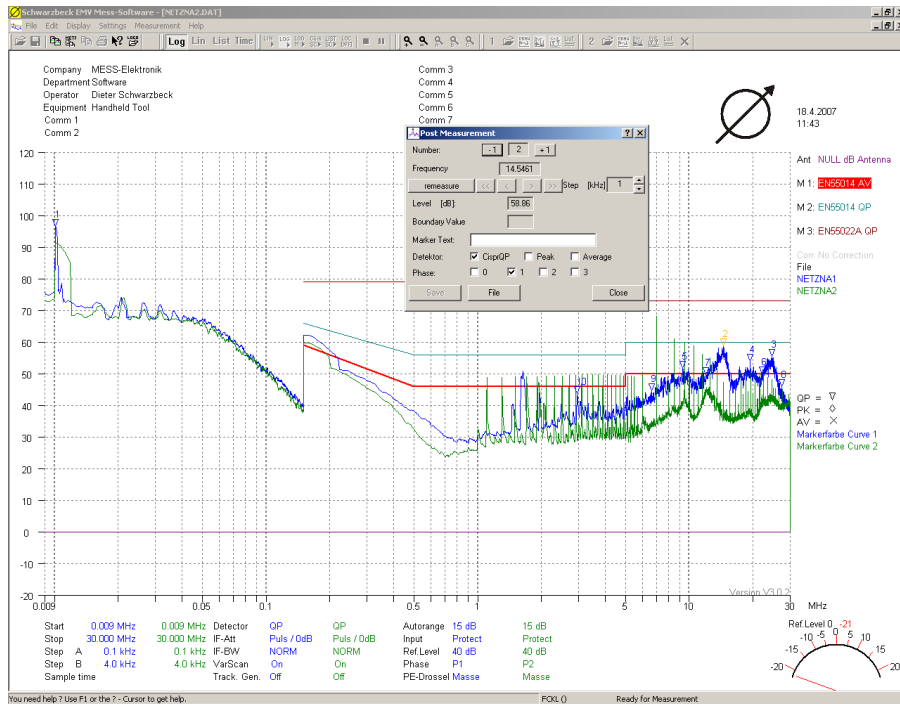
## Limit-Editor



# SCHWARZBECK MESS - ELEKTRONIK

An der Klinge 29 D-69250 Schönau Tel.: 06228/1001 Fax.: (49)6228/1003

## Post-Measurement



## Marker-List

Company: MESS-Elektronik  
 Department: Software  
 Operator: Dieter Schwarzbeck  
 Equipment: Handheld Tool  
 Comm 1  
 Comm 2

Comm 3  
 Comm 4  
 Comm 5  
 Comm 6  
 Comm 7  
 Comm 8

Frequency (MHz)	Level (dB)
1. 0.010	96.80
2. 14.546	59.86
3. 24.590	55.38
4. 19.422	53.80
5. 9.338	51.57
6. 22.046	50.00
7. 12.010	49.61
8. 27.318	45.80
9. 6.634	44.49
10. 2.954	43.88

FOCL () Ready for Measurement