

GENERAL NOTES

- ALL OUTSIDE DIMENSIONS (OD) ARE TO THE EXTERIOR WALLS AND/OR CEILING OF THE RF ENCLOSURE.
- PARENT ROOM FLOOR MUST BE FLAT AND LEVEL WITHIN 1/4" EVERY 10'-0" (NON-ACCUMULATIVE) NOT BY UNIVERSAL SHIELDING CORP.
- A SLAB DEPRESSION OF 1 13/16" IS REQUIRED TO ACHIEVE A SILL LEVEL WITH ADJACENT ROOM OR HALLWAY FLOOR FINISH. NOT BY UNIVERSAL SHIELDING CORP.
- PARENT ROOM FLOOR MUST BE FREE OF ANY OBSTRUCTIONS!
- TO INSURE AGAINST GROUNDING, A 2" MINIMUM CLEARANCE IS REQUIRED BETWEEN RF ENCLOSURE AND BUILDING CONSTRUCTIONS.
- LOCATION OF ISO CENTER SHALL NOT BE DETERMINED BY UNIVERSAL SHIELDING CORP.
- FINAL FABRICATION CANNOT BE COMPLETED UNTIL DRAWINGS ARE APPROVED!
- THE RF ENCLOSURE CEILING SYSTEM IS TYPICALLY SUPPORTED BY PARENT ROOM OVERHEAD CONSTRUCTION WITH THE USE OF DIELECTRICALLY ISOLATED ROOM OVERHEADS. UNIVERSAL SHIELDING CORP. SHALL NOT BE RESPONSIBLE FOR THE EXCLUSIVE OF INTERIOR SUSPENDED CEILING LIGHTING AND DUCTWORK. IT IS THE RESPONSIBILITY OF THE OWNER TO INSURE THAT THE OVERHEAD CONSTRUCTION WILL ADEQUATELY SUPPORT THE RF ENCLOSURE CEILING.
- THE CUSTOMER OR CONTRACTOR MUST PROVIDE A CLEAN, DRY STAGING AREA FOR LAYOUT AND STORAGE OF RF ROOM COMPONENTS AS CLOSE AS POSSIBLE TO THE RF ENCLOSURE INSTALLATION SITE.
- UNIVERSAL SHIELDING CORP. INSTALLATION CREWS SHALL REQUIRE A MINIMUM OF TWO (2) SERVICE CONNECTIONS FOR DROP CORDS. (117VAC, 20 AMP).
- THE CONTRACTOR/OWNER TO PROVIDE REFUSE CONTAINERS FOR THE DISPOSAL OF EXPENDABLE MATERIALS FROM THE RF ENCLOSURE INSTALLATION SITE. THE CONTRACTOR/OWNER SHALL BE RESPONSIBLE FOR THE REMOVAL OF THE REFUSE CONTAINERS.
- AT THE COMPLETION OF THE BASIC ENCLOSURE, THE UNIVERSAL SHIELDING CORP. INSTALLATION SUPERVISOR WILL PERFORM AN ISOLATION TEST TO DEMONSTRATE THAT THE RF ENCLOSURE IS ISOLATED FROM GROUND BY A MINIMUM OF 10,000 OHMS. DURING THE INSTALLATION OF THE VARIOUS SYSTEMS, INTO THE RF ENCLOSURE, AN INDIVIDUAL SHOULD BE DESIGNATED TO MONITOR THE ISOLATION TEST. THE INDIVIDUAL DESIGNATED BY UNIVERSAL SHIELDING CORP. RECOMMENDS THIS TEST TO BE PERFORMED APPROXIMATELY FOUR (4) TIMES DAILY. IF A GROUND IS DETECTED, IT CAN BE FOUND BY REVIEWING THE ADDITIONAL SYSTEMS THAT WERE INSTALLED INTO THE RF ENCLOSURE AFTER THE LAST SUCCESSFUL TEST.
- DO NOT PENETRATE RF PANELS MORE THAN 5/8" WHEN ATTACHING INTERIOR FINISHES. THESE SCREWS SHOULD BE ZINC PLATED AND BE SHEET METAL TYPE. INTERIOR FINISH SCREWS SHOULD NOT PENETRATE OR ATTACH TO THE RF FRAMING SYSTEM. DO NOT PENETRATE BOTH STEEL SKINS OF RF PANEL UNDER ANY CIRCUMSTANCES WITHOUT THE APPROVAL OF UNIVERSAL SHIELDING CORP!

THE NATIONAL FIRE PROTECTION ASSOCIATION LIFE SAFETY CODE 101, SECTION 6-2, "INTERIOR FINISHES", HAS A CLASSIFICATION OF MATERIALS WITH RESPECT TO FLAME SPREAD AND SMOKE DEVELOPED.

THE CLASSIFICATIONS ARE AS FOLLOWS:

- CLASS A INTERIOR FINISH: FLAME SPREAD 0-25; SMOKE DEVELOPED 0-450
- CLASS B INTERIOR FINISH: FLAME SPREAD 26-75; SMOKE DEVELOPED 0-450
- CLASS C INTERIOR FINISH: FLAME SPREAD 76-200; SMOKE DEVELOPED 0-450

INTERIOR FINISH MATERIALS SHALL BE CLASSIFIED IN ACCORDANCE WITH NFPA 266 "METHOD OF TEST OF SURFACE BURNING CHARACTERISTICS OF BUILDING MATERIALS" (ASTM E84).

OUR PANELS TESTED JANUARY 12 1987, RECEIVED A FLAME SPREAD OF 0, IT WOULD FALL INTO THE CLASS A INTERIOR FINISH CATEGORY IN ACCORDANCE WITH NFPA 101, SECTION 6-2.

RF PANELS

RF PANELS SHALL CONSIST OF 26 GA. GALVANIZED STEEL BONDED TO A WOOD CORE TYP FLOOR WALLS & CEILING UNLESS NOTED OTHERWISE

ACCESSORY SCHEDULE

RFI/EMI SHIELDED DOOR

DOOR#	
QUANTITY	1
SIZE	48" x 84"
TYPE	RCM-154FS
SWING	LHI
FINISH	UNSTAINED RED OAK
SILL TYPE	FLUSH
LOCK	T.B.D.

RFI/EMI WINDOW

QTY	SIZE	HEIGHT	WIDTH
1	3'-0"	x	4'-0"
-	-	-	-
-	-	-	-

INTERIOR EYEBOLTS

UNIVERSAL SHIELDING CORP. WILL SUPPLY EYEBOLTS {1/4"-20 x 3/4" INNER DIAMETER} ON A GRID OF 4'-0" x 4'-0" FOR ENTIRE RF ENCLOSURE CEILING TO SUSPEND ACOUSTICAL CEILING.

FILTER BOX

- USC TO INSTALL MAGNET VENDOR SUPPLIED FILTER BOX AT THE TIME OF MAGNET INSTALLATION.
- RF ENCLOSURE WILL BE TESTED PRIOR TO AND AFTER FILTER BOX AND MAGNET INSTALLATION. TESTING BY UNIVERSAL SHIELDING CORP.

RFI/EMI ELECTRICAL FILTERS

QTY	PART #	RATING	USE
3	USC 50-2x30	30 AMPS	POWER & LIGHTING
-	-	-	-
-	-	-	-
-	-	-	-
-	-	-	-
-	-	-	-

NOTE: INSTALLATION BY UNIVERSAL SHIELDING CORP. FINISH BY OTHERS.

SEE FILTER DETAILS FOR SPECIFICATIONS.

PIPE PENETRATIONS

QTY	TYPE	SIZE	USE
-	-	-	-
-	-	-	-
-	-	-	-
-	-	-	-
-	-	-	-

NOTE: EXTERNAL DIELECTRIC CONNECTIONS ARE NOT PROVIDED OR INSTALLED BY UNIVERSAL SHIELDING CORP.

GROUNDING

UNIVERSAL SHIELDING CORP. TO PROVIDE AND INSTALL ONE (1) 3/8"-16 DIAMETER GROUND STUD AS CLOSE AS POSSIBLE TO THE PENETRATION PANEL.

FILTER BOX

MAGNET ENTRY

UNIVERSAL SHIELDING CORP. TO PROVIDE A REMOVABLE WALL SECTION FOR MAGNET ENTRY.

WAVEGUIDE AIRVENTS

QTY	TYPE	SIZE	COLLARS
TBD	T.B.D.	T.B.D.	BOTH SIDES
-	-	-	-
-	-	-	-
-	-	-	-
-	-	-	-
-	-	-	-

CRYOGEN PIPE PENETRATION

QTY	SIZE
-	-
-	-

PENETRATION PANEL

- USC TO INSTALL MAGNET VENDOR SUPPLIED PENETRATION PANEL AT TIME OF MAGNET INSTALLATION.
- RF ENCLOSURE WILL BE TESTED PRIOR TO AND AFTER PENETRATION PANEL AND MAGNET INSTALLATION. TESTING BY UNIVERSAL SHIELDING CORP.

VINYL TILE

ONE (1) LAYER OF 1/8" THK TILE BONDED TO TOP OF RF FLOOR PANEL TO ACHIEVE A LEVEL FLOOR SURFACE FOR FLOOR FINISHES.

RF ENCLOSURE UNDERLAYMENT

ONE (1) THK 1/8" THK HARDBOARD SHIMMING LAYER AND ONE (1) 1/8" THK HARDBOARD LEPERING LAYER OVER ONE (1) LAYER OF 6 MIL. THK POLYVINYL MOISTURE BARRIER.

OPERATION & MAINTENANCE

1. OPERATING PROCEDURES:

UPON COMPLETION OF THE INSTALLATION OF THE RF SHIELDED ENCLOSURE, TO GAIN ENTRANCE AND EXIT FROM THE ENCLOSURE, ONE ROTATES THE DOOR HANDLE IN A CLOCKWISE OR COUNTERCLOCKWISE DIRECTION RESPECTIVELY. THE DOOR MUST BE IN THE FULLY CLOSED AND LATCHED POSITION TO MAINTAIN SHIELDING INTEGRITY.

2. MAINTENANCE PROCEDURES:

- THE FOLLOWING MAINTENANCE PROCEDURES SHOULD BE FOLLOWED.
 - CLEAN THE BRASS KNIFE EDGE ON THE DOOR ONCE WEEKLY WITH A SOFT CLOTH AND ALCOHOL.
 - SPRAY DC-26 LUBRICANT ON THE BERYLLIUM COPPER FINGERS LOCATED ON THE DOOR ONCE WEEKLY.
 - IF THE DOOR SHOULD REQUIRE ADJUSTMENT, THE HINGES ARE ADJUSTABLE FOR HORIZONTAL AND VERTICAL ALIGNMENT.
 - IF THE DOOR SHOULD REQUIRE ADJUSTMENT, THE HINGES ARE ADJUSTABLE FOR HORIZONTAL AND VERTICAL ALIGNMENT.
 - HONEYCOMB AIR WAVEGUIDE DUCTS SHOULD BE CLEANED YEARLY WITH A SMALL BRUSH IF AIR FLOW BECOMES RESTRICTED.
 - IF LIQUIDS ARE SPILLED IN A SHIELDED ENCLOSURE AND BECOME LODGED BETWEEN THE FRAMING MEMBERS AND PANELS IT WILL CAUSE A DEGRADATION OF THE ENCLOSURE SHIELDED PROPERTIES. IT IS IMPERATIVE THAT THE FOLLOWING ITEMS BE FOLLOWED.
 - NO FOOD OR LIQUIDS (SODA, COFFEE, ETC.) BE CONSUMED WITHIN THE ENCLOSURE.
 - NO WET CLOTHES OR SHOES BE WORN IN THE ENCLOSURE.
 - NO BURNING OR WELDING SHOULD BE PERFORMED WITHIN THE ENCLOSURE.
 - CLEAN ANY OIL OR FLUID FROM PIPES TO BE USED BEFORE IT ENTERS THE ENCLOSURE.
 - IF A COMPUTER FLOOR IS INSTALLED IN THE ENCLOSURE, THE TILE SURFACE CANNOT BE CLEANED WITH ANY LIQUID THAT WOULD SPILL ONTO THE ENCLOSURE FLOOR.
 - DO NOT ALLOW ANY UNAUTHORIZED PENETRATIONS OF THE RF ENCLOSURE TO OCCUR.
 - IF THE PARENT ROOM CEILING IS QUESTIONABLE, PREPARATIONS SHOULD BE TAKEN TO PROTECT THE RF ENCLOSURE CEILING. ALL FRAMING JOINTS SHOULD BE TAPED.
- TRUBLESHOOTING PROCEDURES:
 - IF ATTENUATION LOSS OCCURS, THE FOLLOWING ITEMS SHOULD BE OBSERVED.
 - NO UNAUTHORIZED PENETRATIONS WAS MADE, I.E., UNPLUGGED WIRE OR PIPING.
 - CHECK THAT ALL DOOR FINGERSTOCK IS IN PLACE AND NOT DEFORMED.
 - CHECK THAT NO SCREWS WERE LOOSENER OR REMOVED.
 - ALLOWABLE LOADS:
 - THE ALLOWABLE LOADS ON TOP OF THE RF ENCLOSURE CAN BE 50 LBS. PER SQ. FT. AND THE WEIGHT MOUNTED ON SHELVES OR WALLS IS 65 LBS.
- SPARE PARTS:

THE FOLLOWING SPARE PARTS ARE RECOMMENDED.

 - BERYLLIUM COPPER FINGERSTOCK - PART NO. USC-97-583
 - DOOR LUBRICANT (ONE CAN) - PART NO. RCM-LB-100

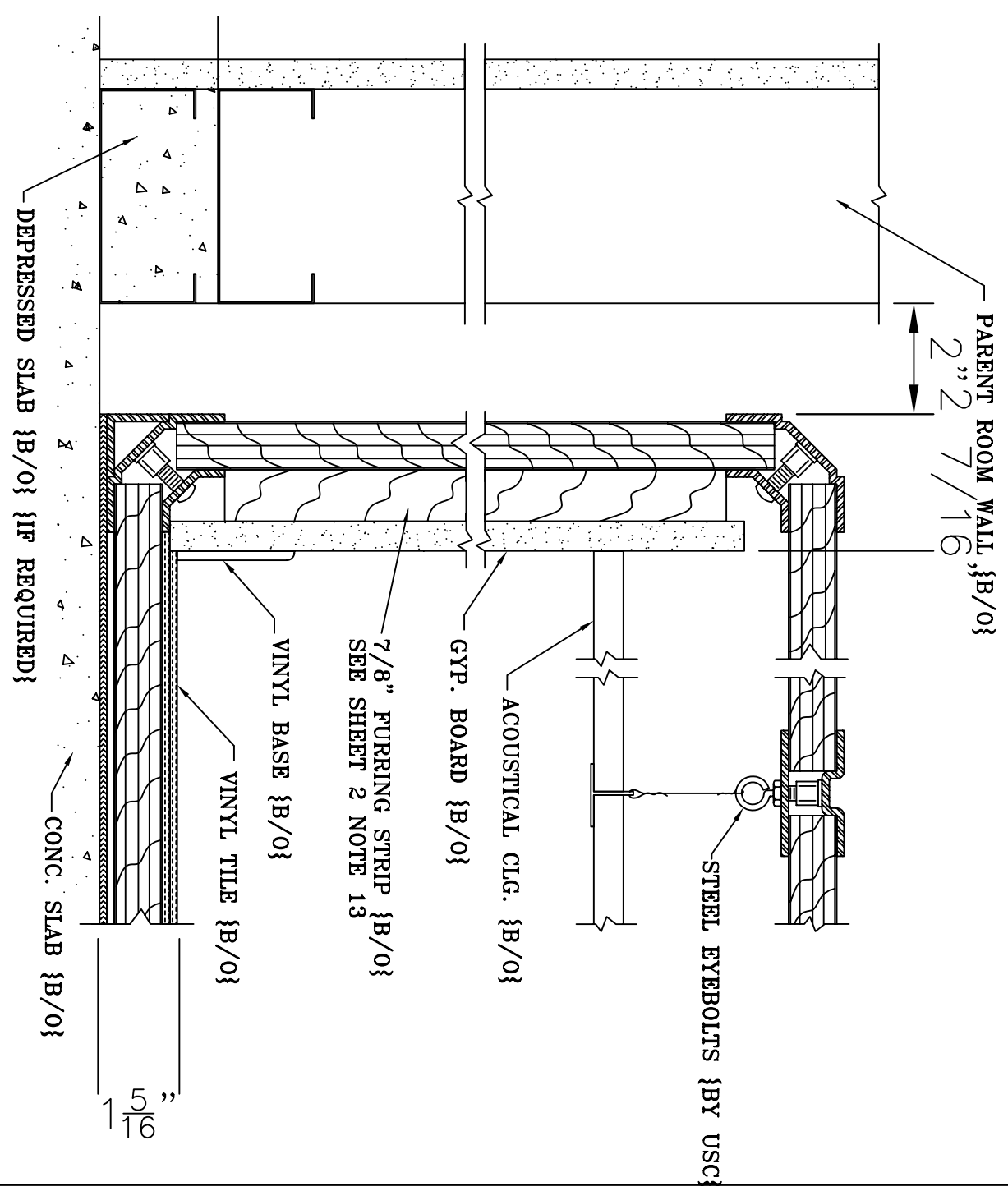
LEGEND

- 00 - OUTSIDE DIMENSION
- ID - INSIDE DIMENSION
- OA - OVERALL
- Ht - HEIGHT
- 6 - CENTERLINE
- V.I.R. - VERIFY IN FIELD
- P.R. - PARENT ROOM
- DETAIL NUMBER
- B/O - BY OTHERS
- T.B.D. - TO BE DETERMINED
- CLR VW. - CLEAR VIEW
- CLR OP. - CLEAR OPENING
- MS - MAGNET ISOCENTER
- REFER TO SHEET

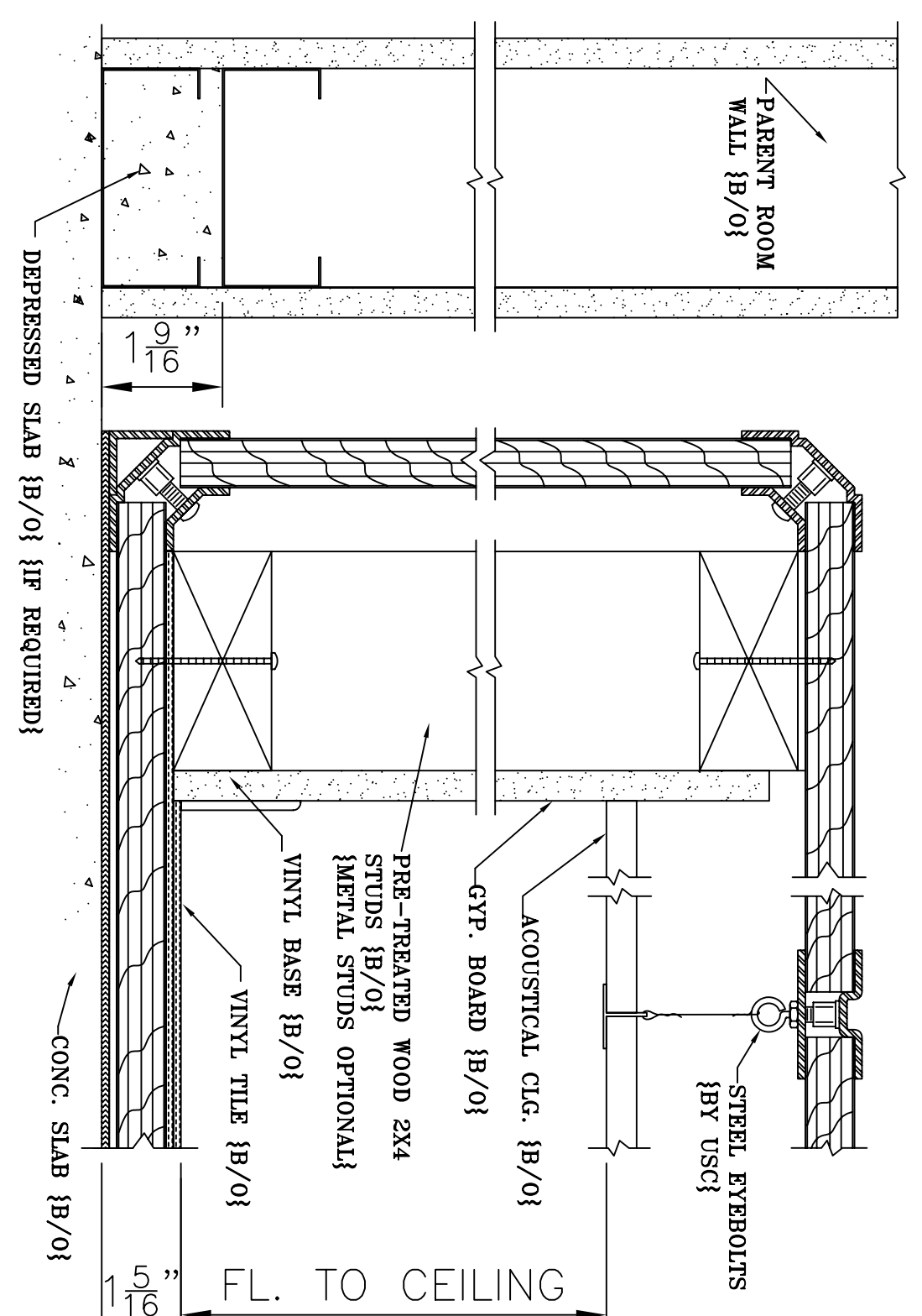
SHEET 1 OF 4

MATERIAL:	FINISH:	HEAT TREAT
MAGNET:		
SCALE: N.T.S.	DRAWN: -	DATE: -
REVISIONS:	CHECKED: -	DATE: -
	APPROVED: -	DATE: -
	SIZE	DRAWING NUMBER
	USC-	ISSUE

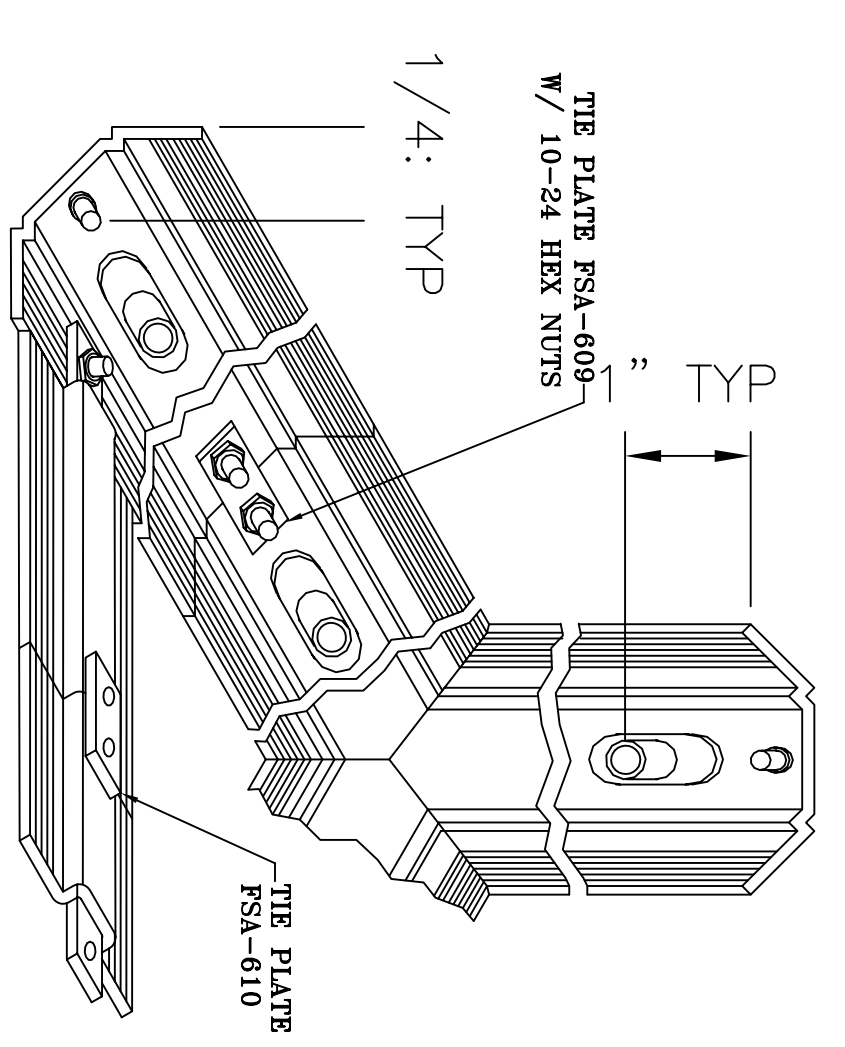
UNIVERSAL SHIELDING CORP.



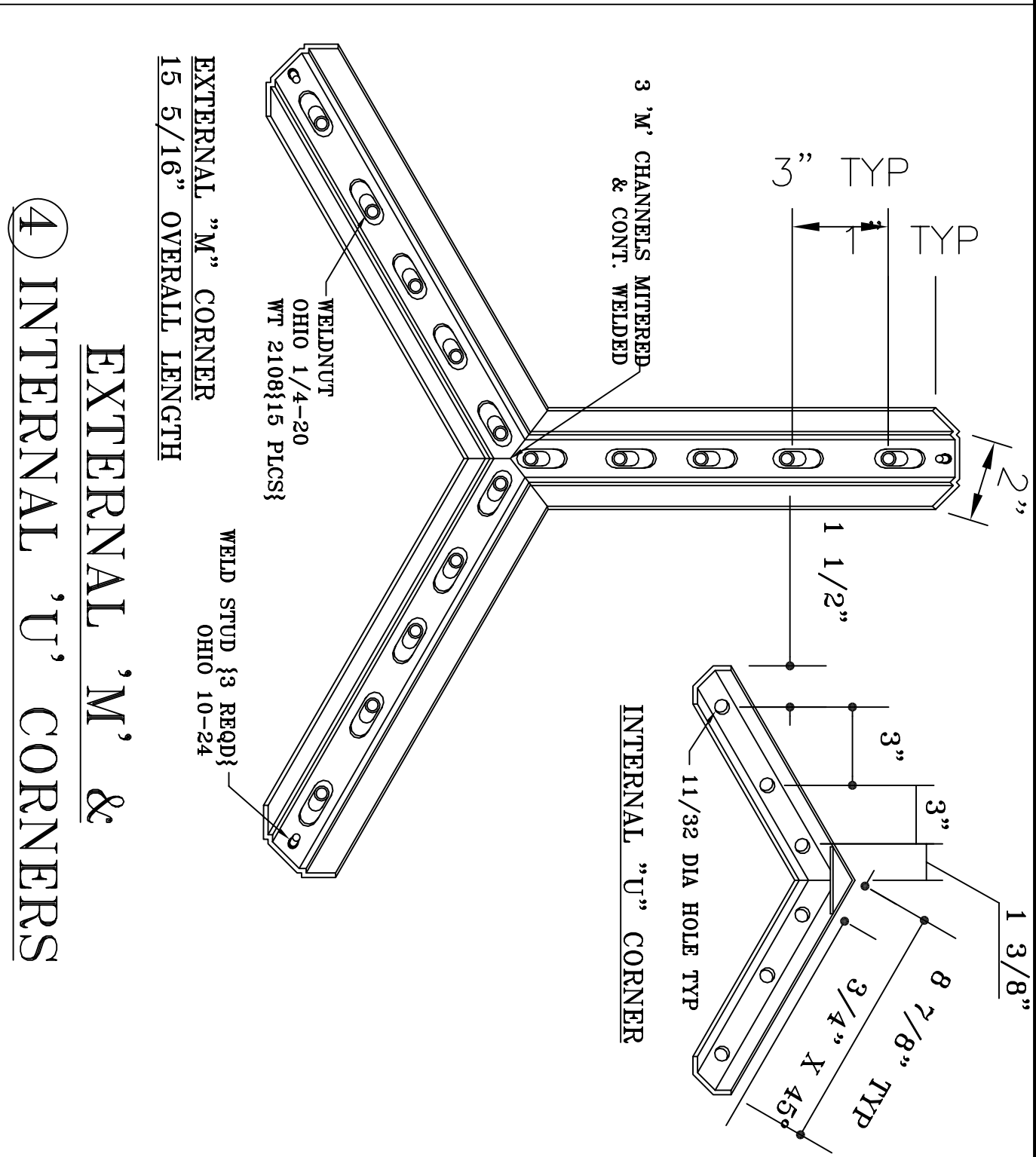
① RF ENCL SECTION W/ 7/8" FURRING



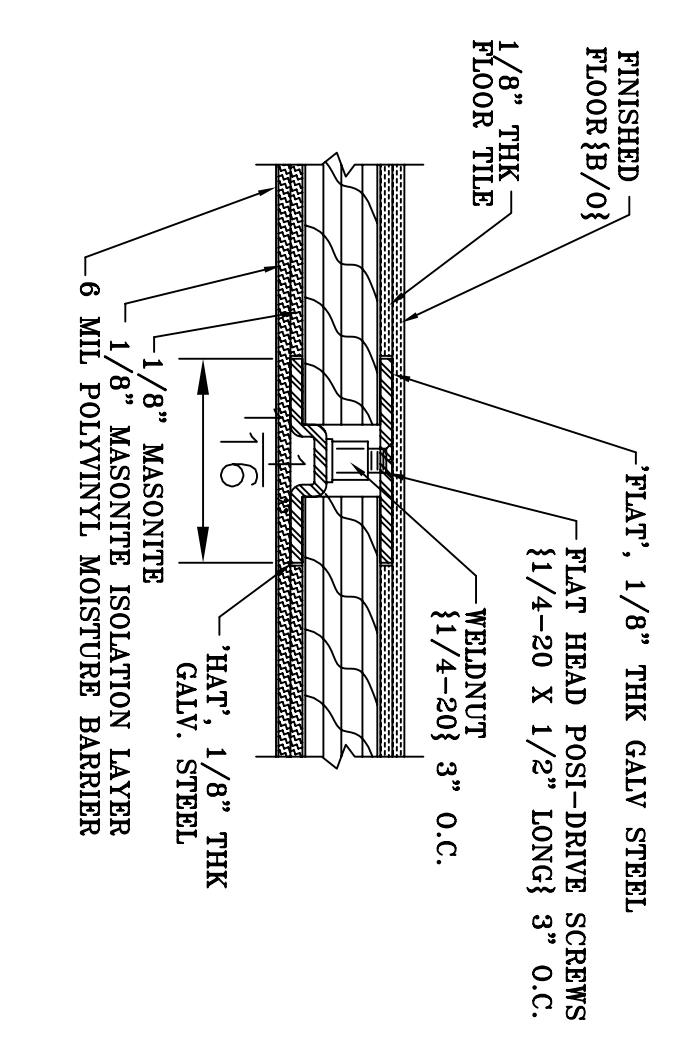
② RF ENCL SECTION W/ 2X4 STUDS



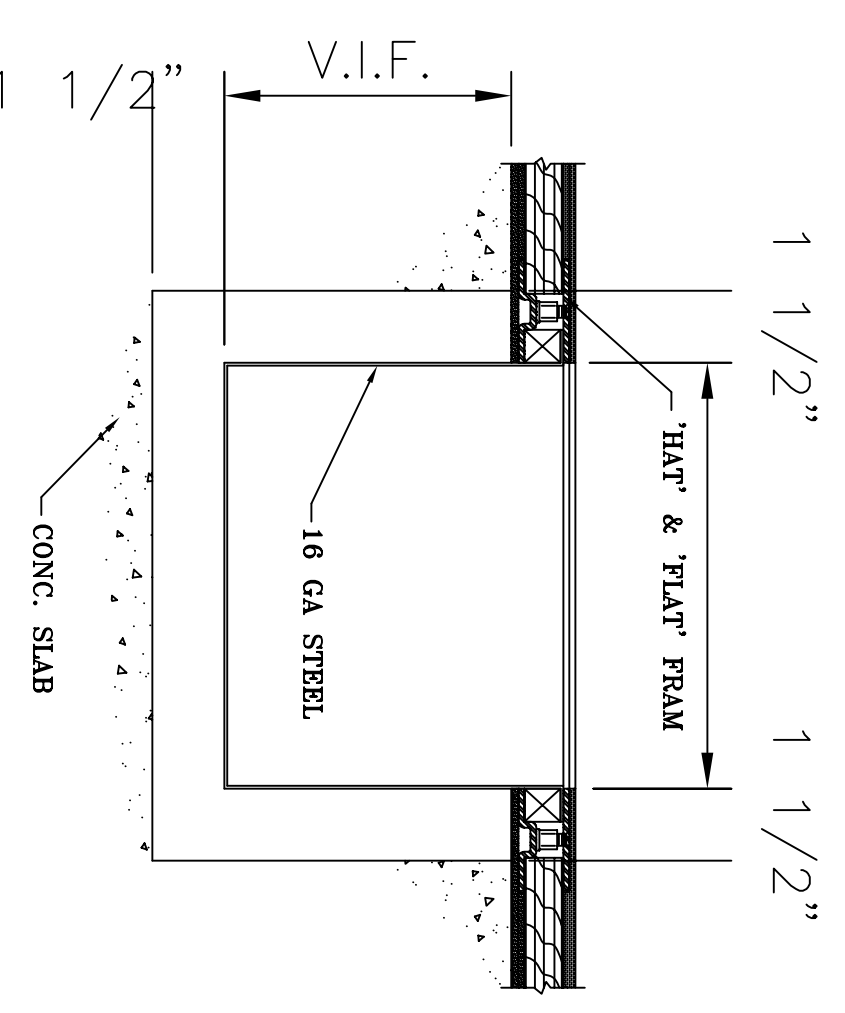
③ METHODS OF ATTACHMENT



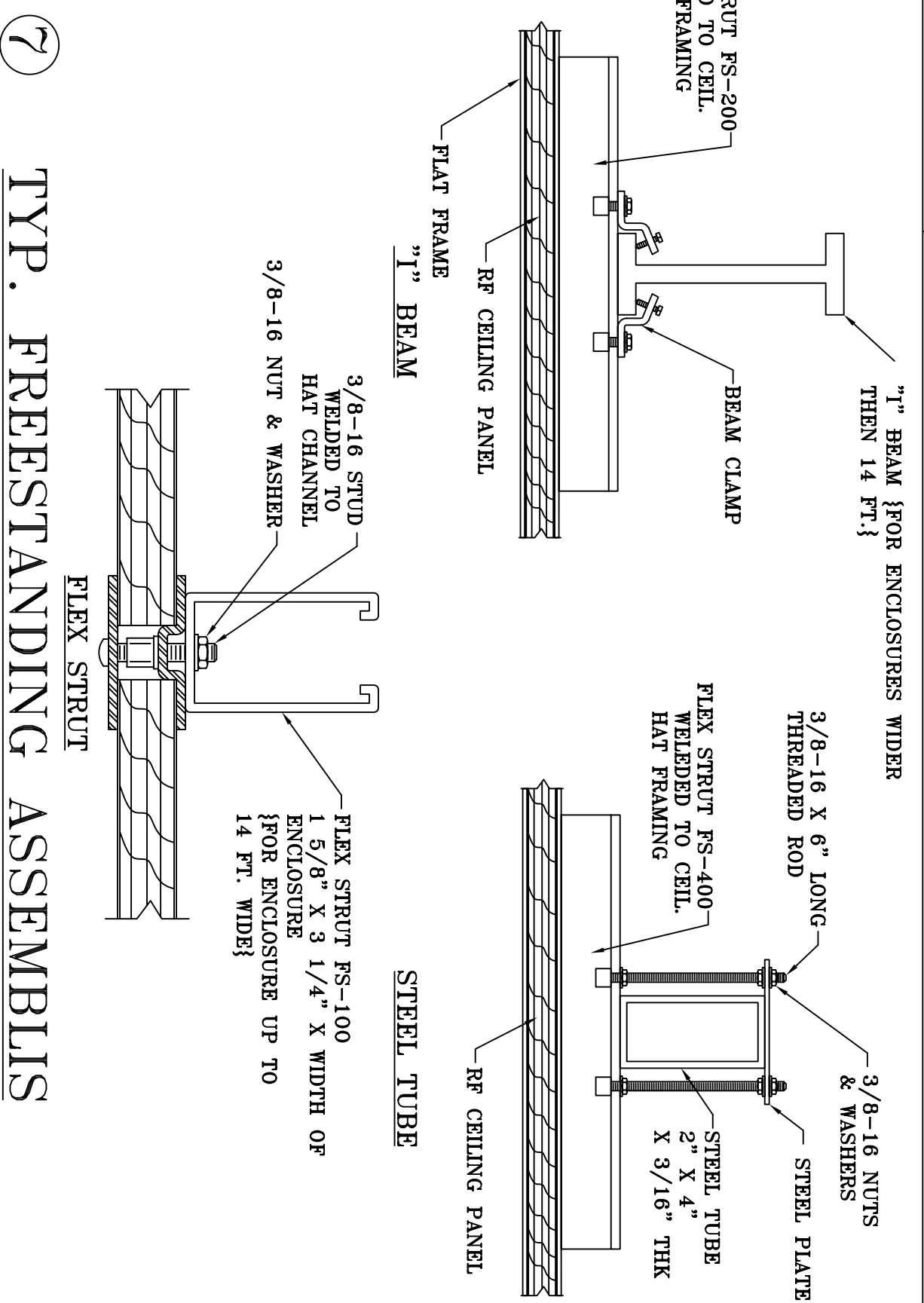
④ EXTERNAL 'M' & INTERNAL 'U' CORNERS



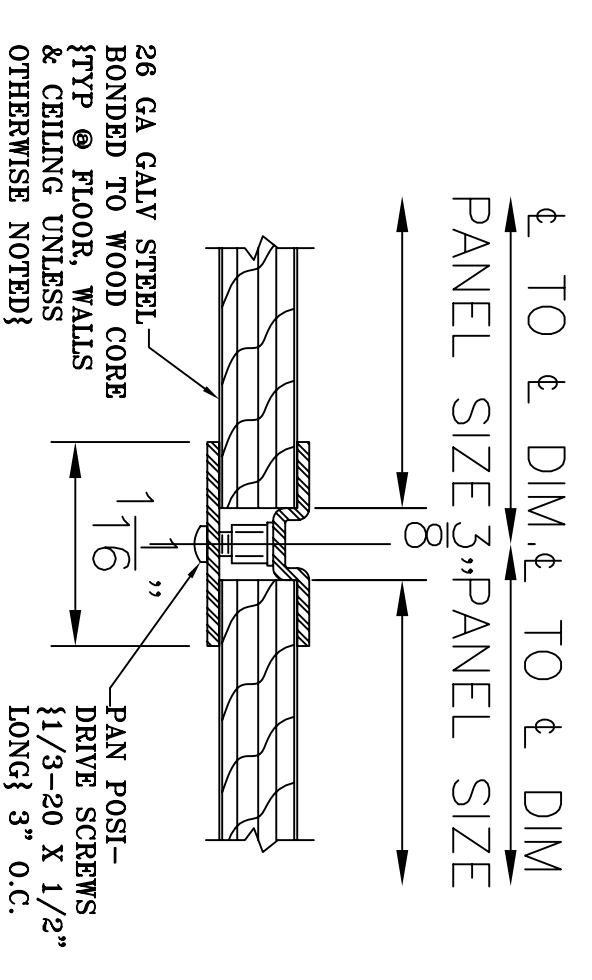
⑤ INTERMEDIATE JOINTS @ FLOOR



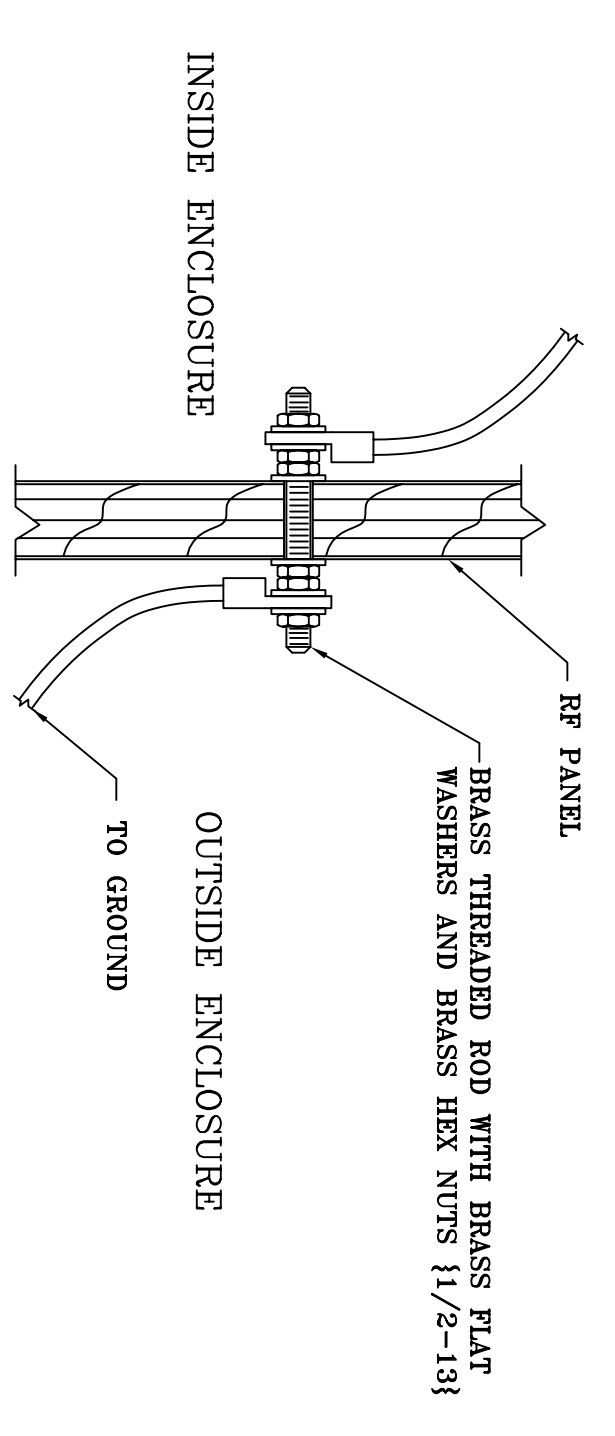
⑥ RF SHIELDED FLOOR PAN DETAIL



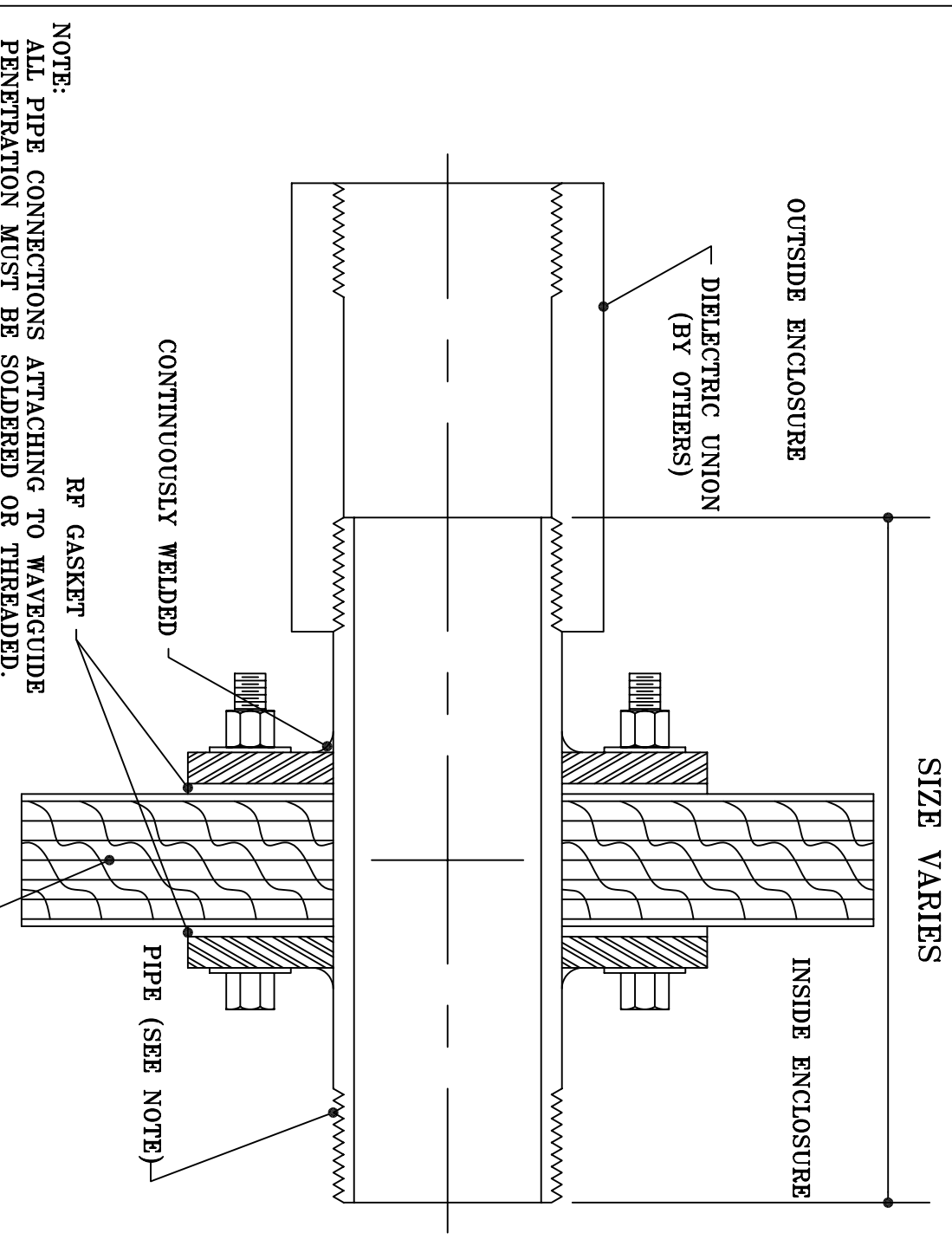
⑦ TYP. FREESTANDING ASSEMBLIS



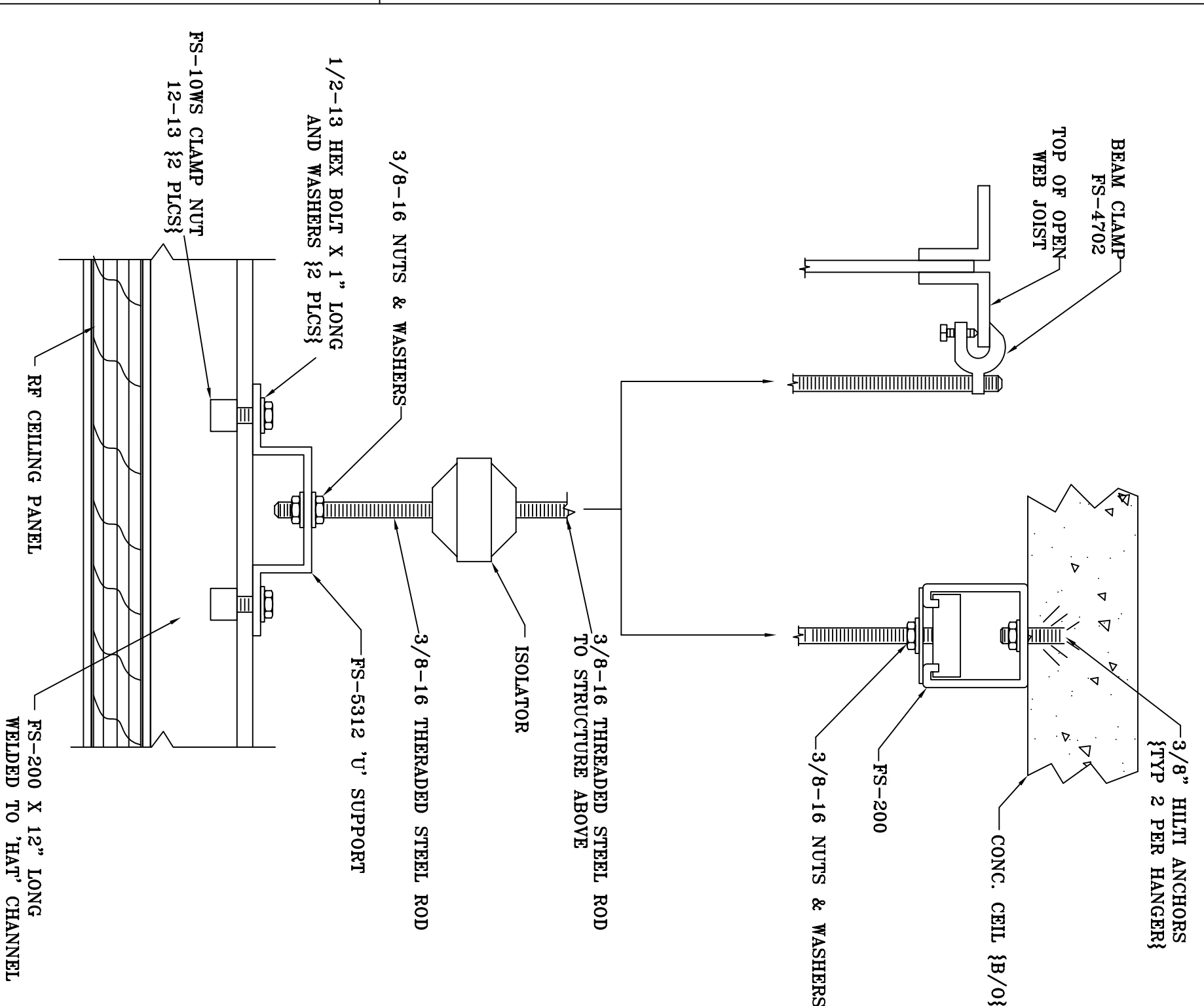
⑨ INTERMEDIATE JOINTS @ WALLS & CEILING



⑩ GROUND STUD

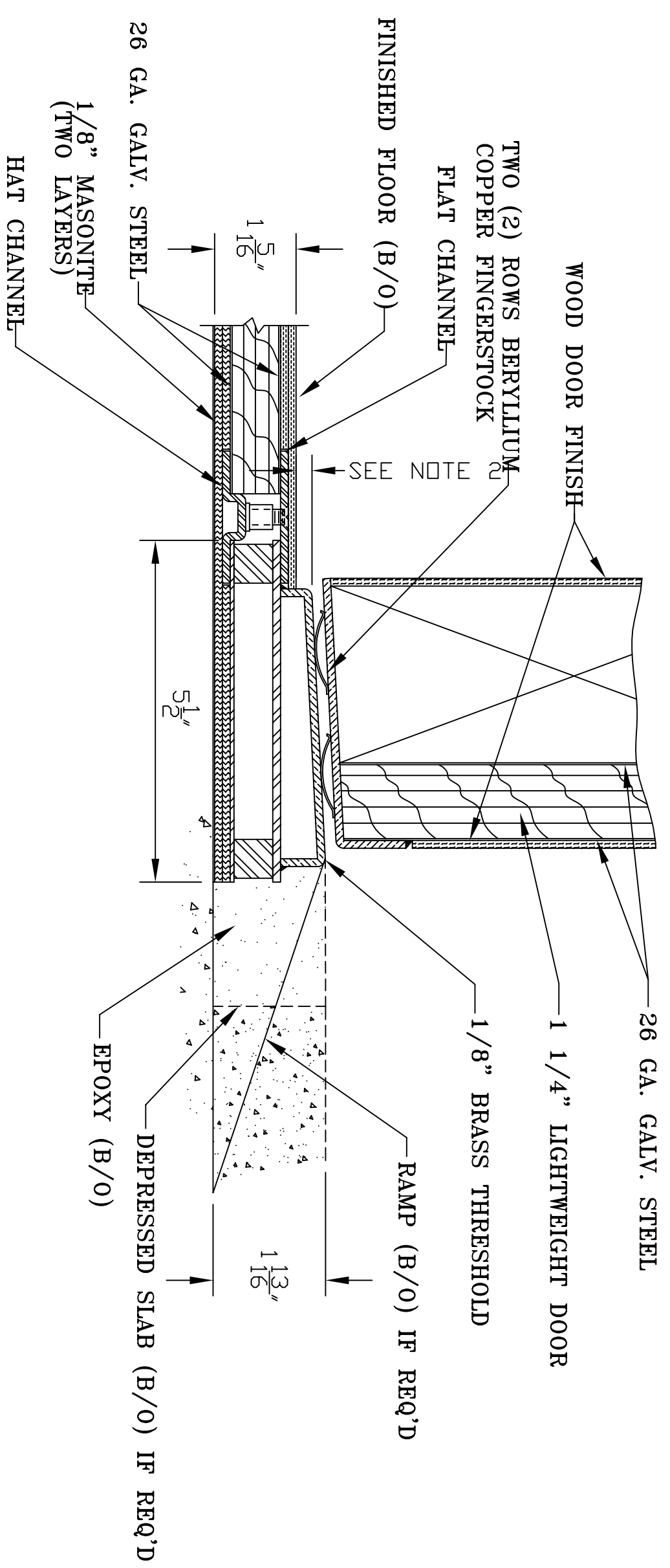


⑪ INSULATED PIPE PENETRATION

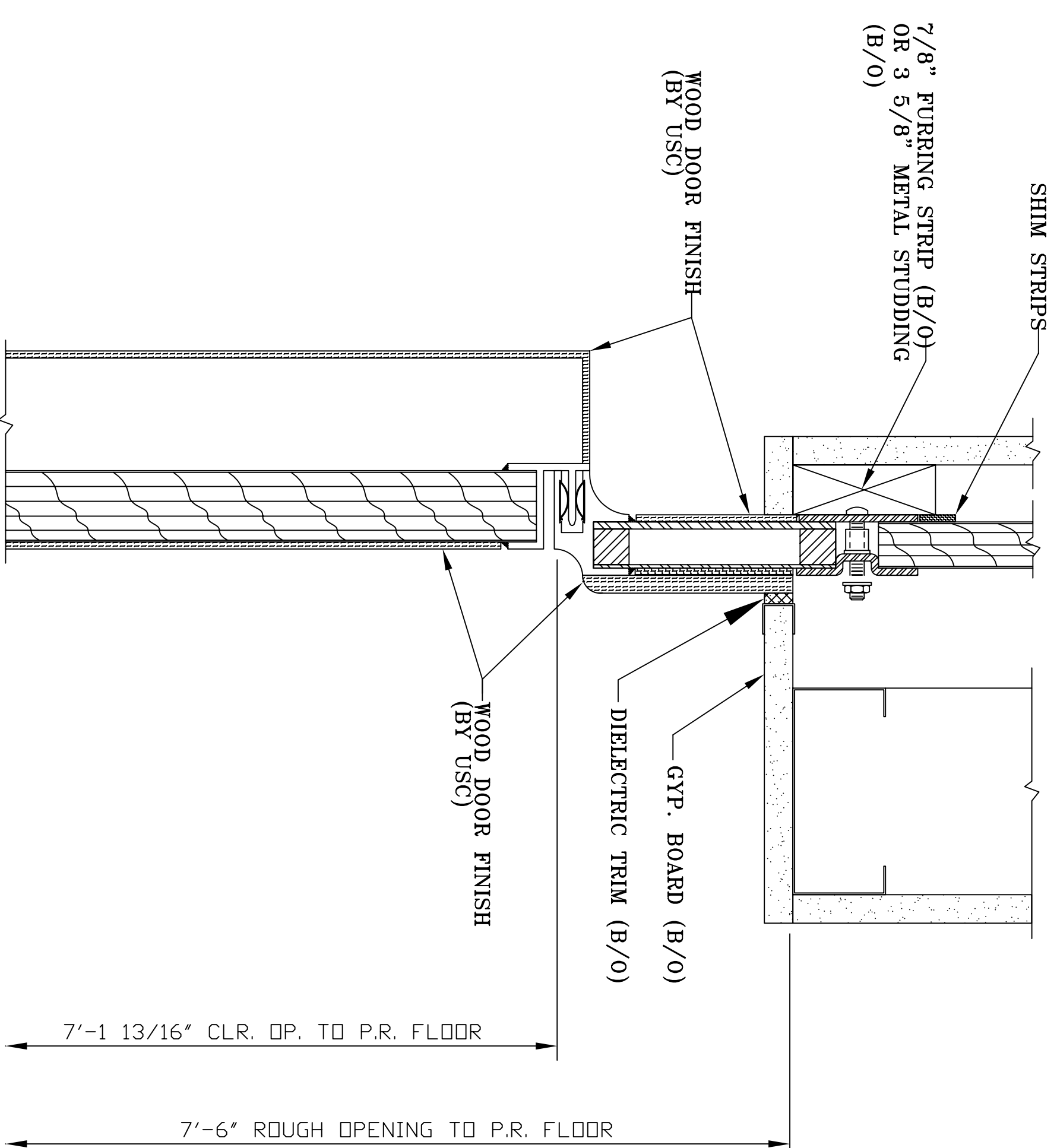


⑧ ISOLATED CEILING HANGER ASSEMBLY

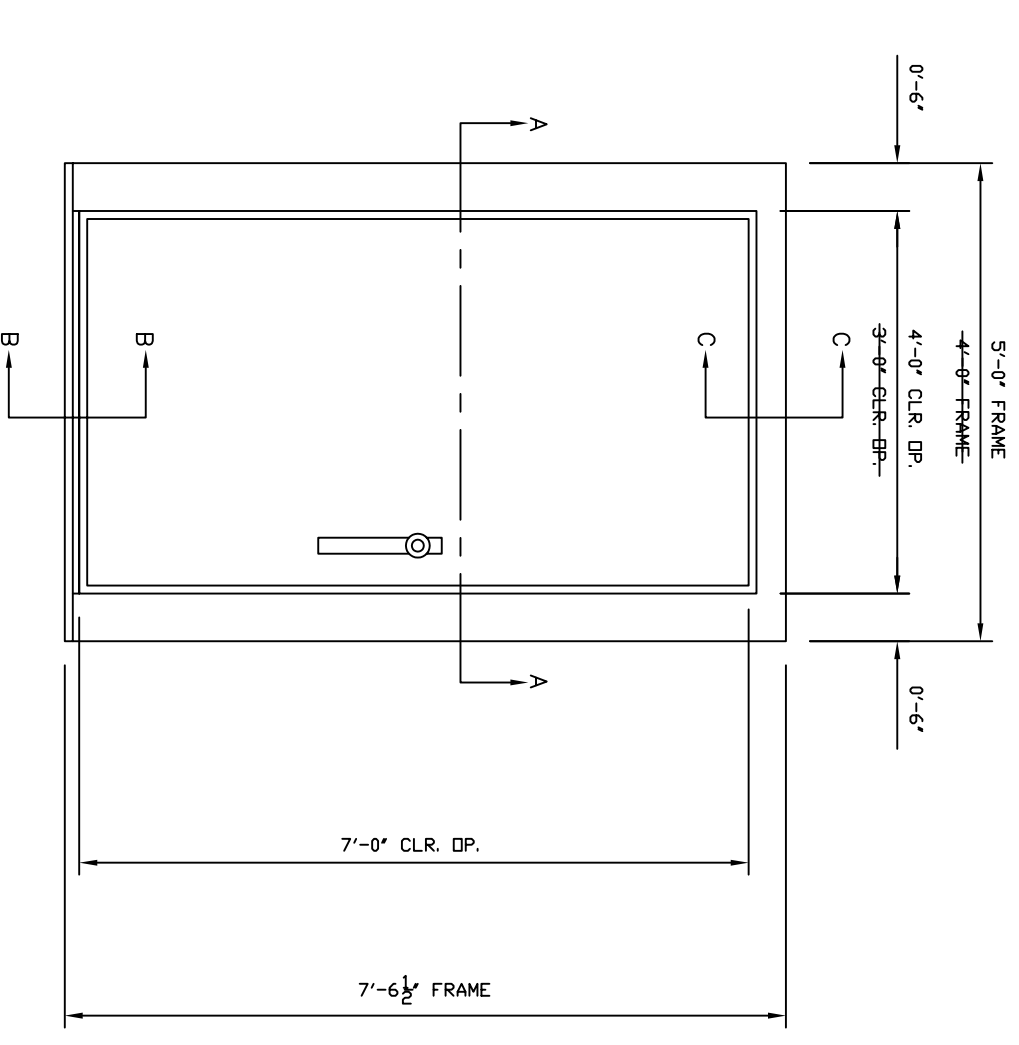
MATERIAL:	FINISH:	HEAT TREAT:	WEIGHT:
MAGNET:	TITLE:		
SCALE: N.T.S.	DRAWN: DATE:	SIZE: DRAWING NUMBER	ISSUE
CHECKED: DATE:	APPROVED: DATE:	UNIVERSAL SHIELDING CORP.	
REVISED: DATE:		D USC: - - -	



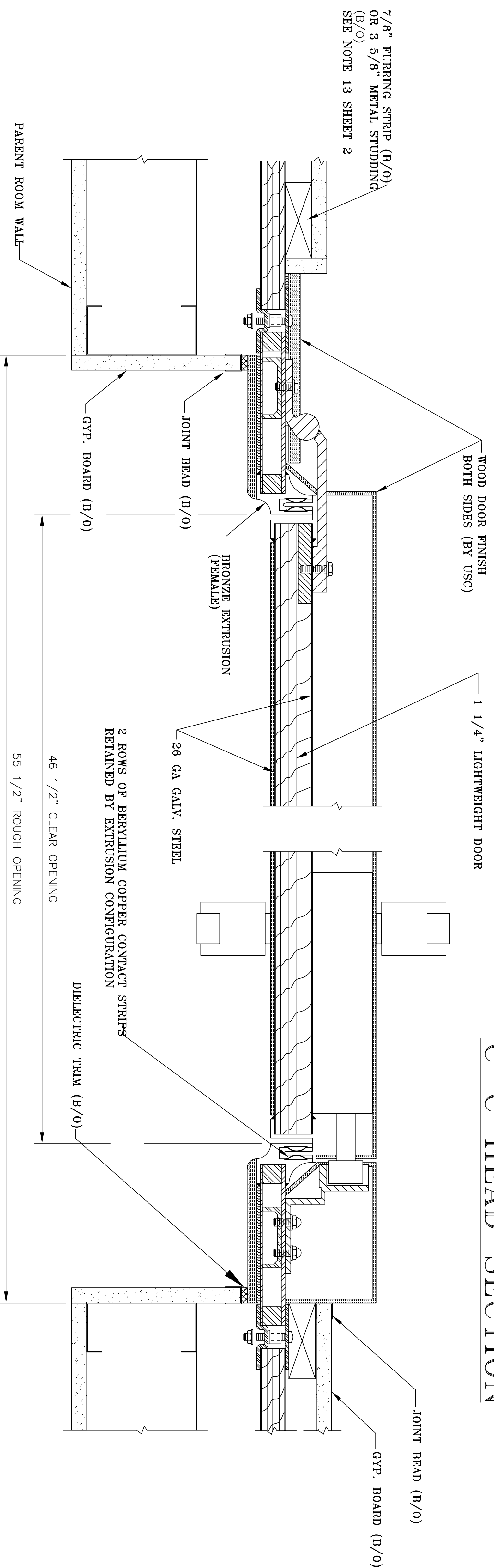
B-B SILL SECTION



C-C HEAD SECTION



DOOR ELEVATION



A-A DOOR SECTION

22 DOOR SECTIONS AND DETAILS

- NOTES:
1. INNER DOOR SWING ONLY
 2. 1/4" IS REQUIRED BETWEEN THE TOP OF THE FINISHED FLOOR TO THE TOP OF THE SILL
 3. SEE SHEET 2 FOR SIZE AND SWING
 4. DOOR EXTRUSION IS FACTORY MITERED, WELDED AND SOLDERED CONTINUOUSLY INSIDE AND OUTSIDE
 5. RF DOOR IS PROVIDED WITH A MULTIPLE POINT LATCHING MECHANISM
 6. RF DOOR IS DESIGNED FOR A FINISHED FLOOR 1/8" THICK, IF ADDITIONAL THICKNESS IS REQUIRED, PLEASE NOTE

SHEET 4 OF 4

MATERIAL:	-	FINISH:	-	HEAT TREAT:	-
MAGNET:	=	TITLE:	=	WEIGHT:	-
SCALE:	N.T.S.	DRAWN:	-	DATE:	-
CHECKED:	-	DATE:	-	DATE:	-
REVISED:	-	APPROVED:	-	DATE:	-
				SIZE:	D
				DRAWING NUMBER:	USC-
				ISSUE:	-

UNIVERSAL SHIELDING CORP.