

## High Gain Horn Antenna

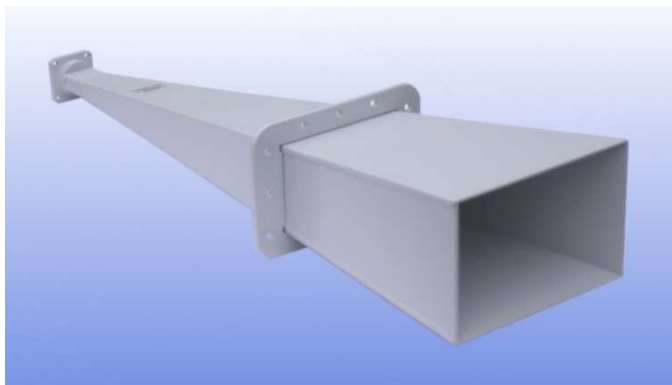
**8 to 12.5 GHz**

**WG16 R100 WR90**

Catalogue number: **QSH-SL-8-12-F-23**

Q-par reference: **QMS-00171**

Contents: **Summary**  
**Typical Gain / Antenna Factor at 1m**  
**Typical Beamwidth / Patterns at 1m**  
**VSWR**



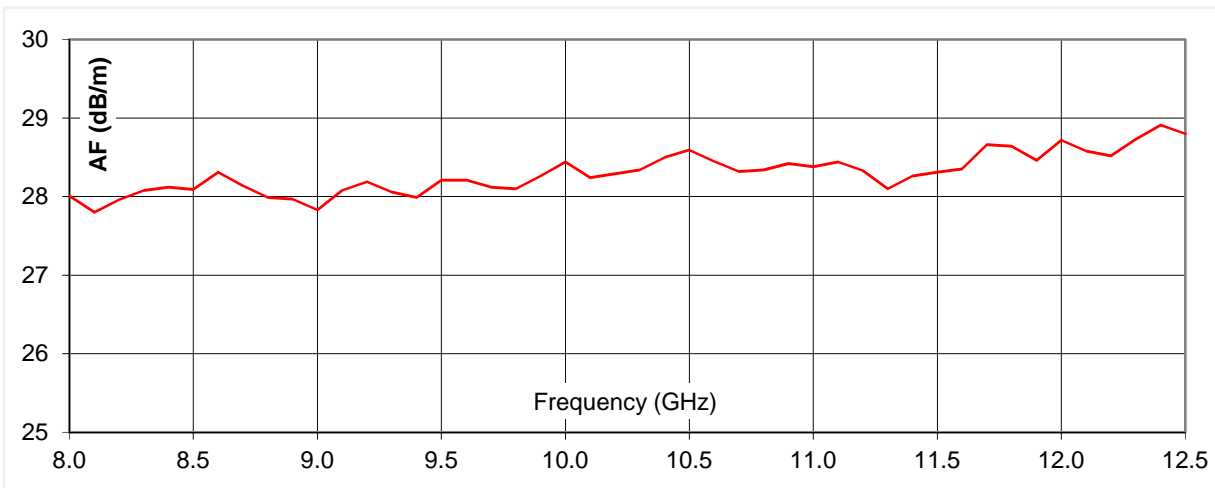
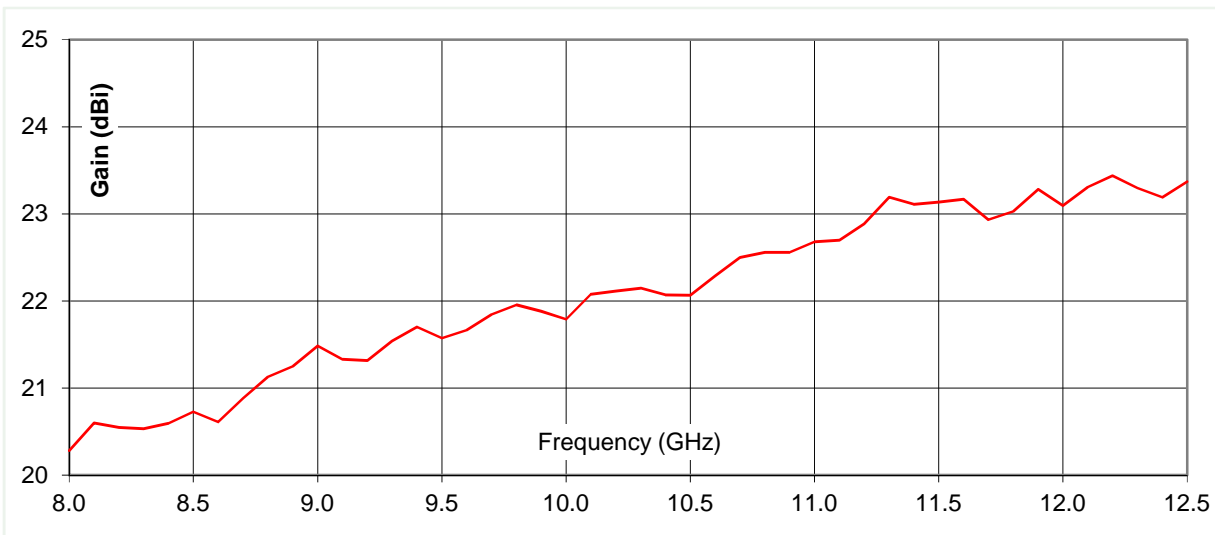
Test Report

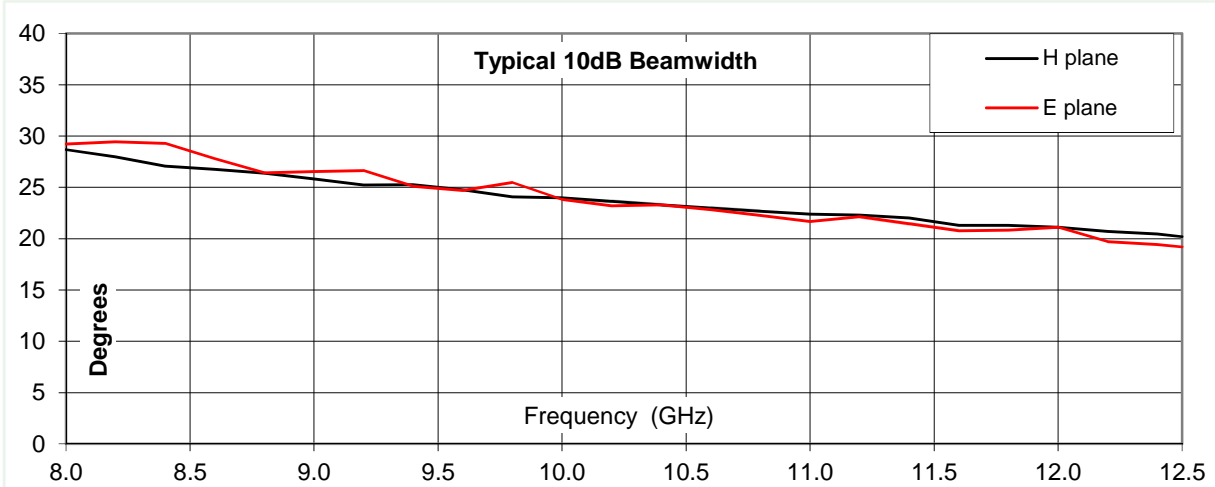
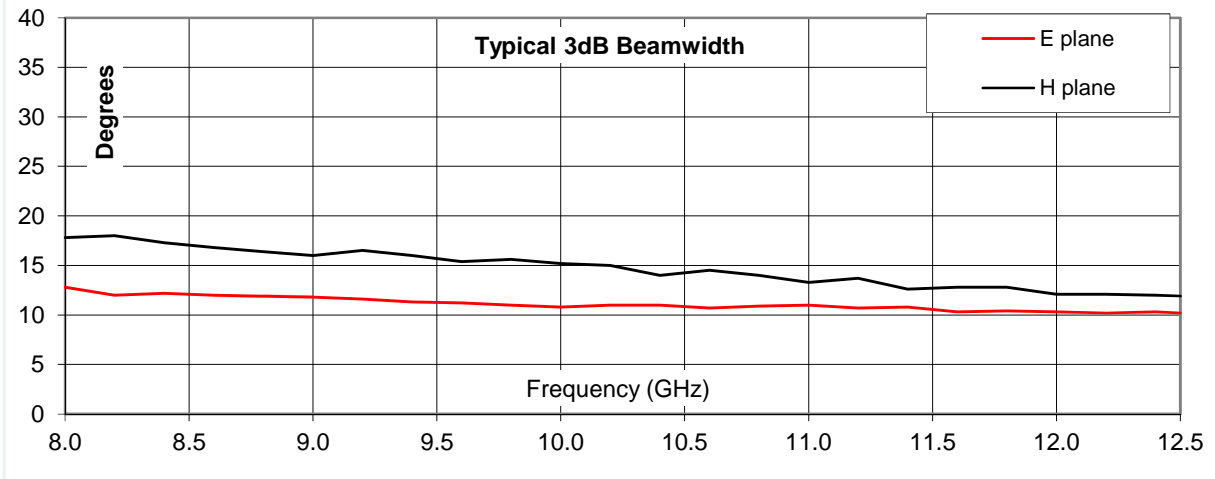
### Typical Specification

<b>Frequency</b>	8 to 12.5 GHz
<b>Connector type</b>	UBR100 waveguide Flange
<b>Power Handling</b>	10 kW c.w.
<b>VSWR</b>	< 1.15 :1
<b>Gain</b>	20.5 to 23.4 dBi
<b>Antenna Factor</b>	27.8 to 28.9 dB/m
<b>3dB Beamwidth</b>	10 to 17 degrees
<b>10dB Beamwidth</b>	19 to 29 degrees
<b>Weight</b>	1.2 kg nominal
<b>Size- max.</b>	169 x 112 mm external aperture x 531 mm long
<b>Mounting</b>	12 holes, diameter 6 mm, 35 mm centres
<b>Construction</b>	Welded aluminium, powdercoat finish.

### Typical Antenna Gain / Factor at 1 metre

This is calculated by reference to standard gain horn antennas, and cross checked with reference to the antenna beamwidth, with an estimated error of +/- 0.8dB.

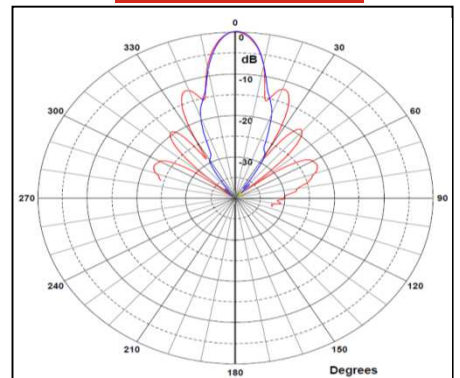
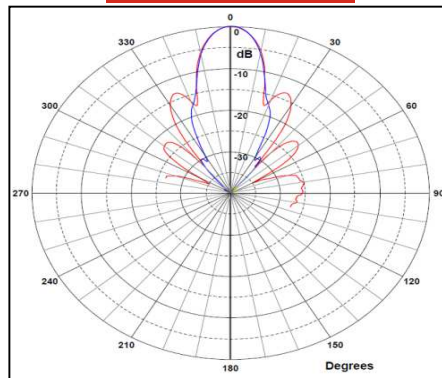
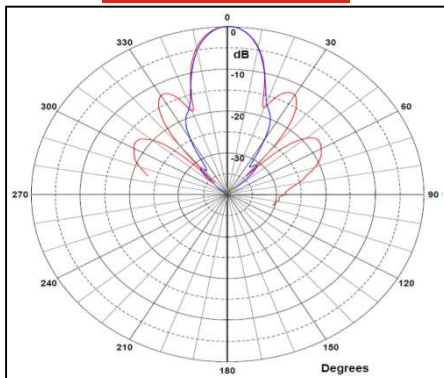




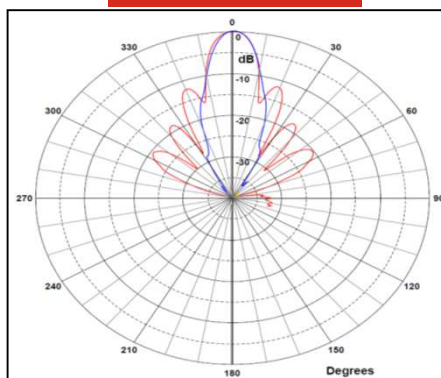
8.0 GHz

9.0 GHz

10.6 GHz



11.6 GHz



Red trace = E-plane, Blue trace = H-plane cut