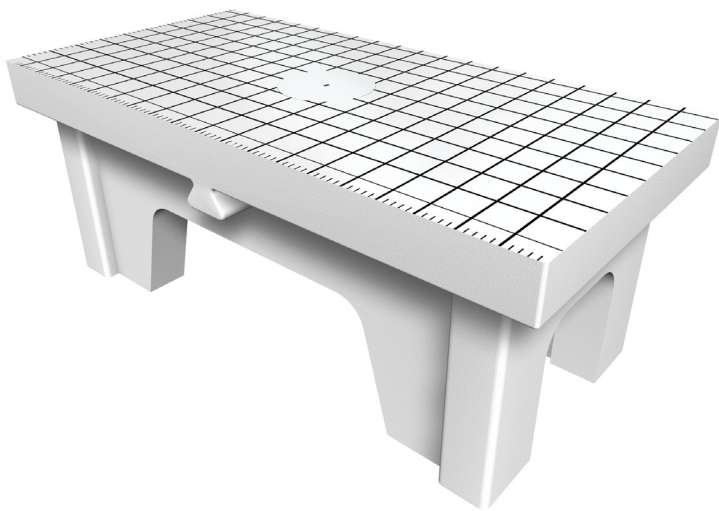


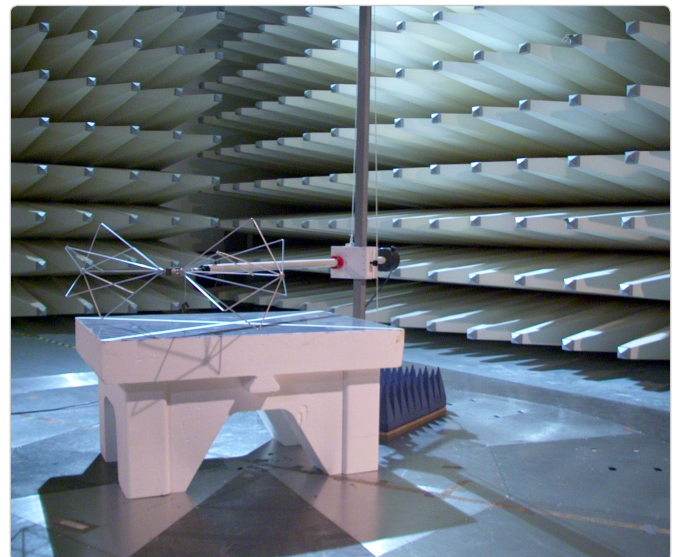
# LOW REFLECTIVE TESTING TABLE – FTT

Frankonia's ISO testing table FTT was designed in accordance with CISPR 22. In order to not affect the EMC or RF measurements, this transparent test table is made of non-conductive material that generates no reflections and has a low dielectric constant. The top of the table is covered with PVC to offer a non-sensitive surface, and it provides a scale to facilitate the positioning of equipment under test. A hole in the center of the table allows a convenient guiding of EUT cables. The Frankonia testing table FTT is available in various sizes, as well as in square- and round-shaped versions.



## Features

- Compliance in accordance with CISPR 22
- EUT weight up to 200 kg
- Perfect integration into Frankonia chambers
- Grid pattern for EUT positioning



## Low-Reflective Testing Table – FTT

### Technical specification

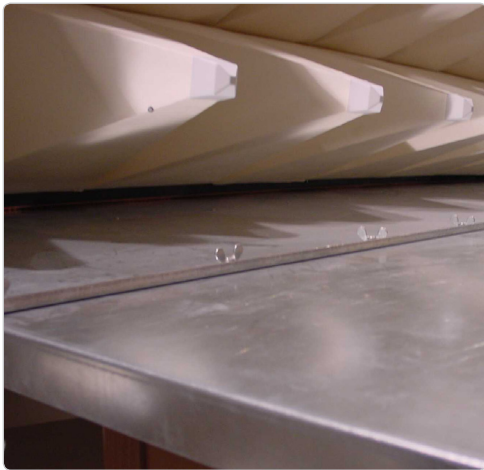
Version	FTT square	FTT round
Dimension (L x W x H)	Square size: 1.0 m x 0.8 m x 0.8 m 1.5 m x 1.0 m x 0.8 m 2.0 m x 1.0 m x 0.8 m 1.5 m x 1.2 m x 0.8 m 2.0 m x 1.2 m x 0.8 m	Round size: ø 1.2 m x 0.8 m ø 1.5 m x 0.8 m
Table material	Styrofoam	
Compliance	CISPR 22	
Maximum load	200 kg	
Spot load	20 kg at 200 mm x 200 mm	
Color	White	
Cover material	PVC	
Center hole	ø 250 mm	

# GROUNDING TESTING TABLE – FGT

Frankonia's grounded testing table FGT was designed according to CISPR 25. It is available in two sizes of 2.5 x 1.0 x 0.9 m and 2.5 x 1.5 x 0.9 m. The table itself is made of wood and is optional equipped with wheels and brakes for easy handling. It is covered with a hot galvanized ground plane of 2.0 mm thickness. To ensure the grounding of the table, two grounding systems are available. It can be grounded with an F-contact system integrated either in the wall or the floor. The grounded test table can carry EUTs of up to 500 kg weight.

## Features

- Compliance in accordance with CISPR 25
- EUT weight up to 500 kg
- Perfect integration into Frankonia chambers
- Adjustable contact strips either to the floor or into the wall
- Wheels on option



## Grounded Testing Table – FGT

### Technical specification

Version	FTG-1.0	FTG-1.5
Dimension (L x W x H)	2.5 m x 1.0 m x 0.9 m	2.5 m x 1.5 m x 0.9 m
Compliance	CISPR 25	
Maximum load	500 kg	
Spot load	50 kg at 200 mm x 200 mm	
Table cover	2.0 mm hot galvanized ground plane Optional: brass or copper ground plane	